

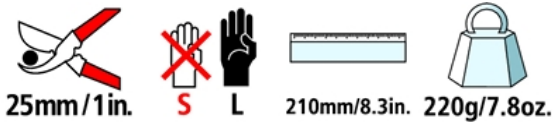
FELCO 4 - Green

Pruning shear - Good performance - Standard model

Made in Switzerland by FELCO



Available from mid 2014



- > **Reliable:** comfortable, light, sturdy handles made of forged aluminium with a lifetime guarantee* / blade and riveted anvil blade made of high-quality hardened steel / clean, precise cut / all parts can be replaced
- > **Efficient:** easy cutting adjustment / wire cutting notch / sap groove
- > **Ergonomic:** non-slip coating

RECOMMENDED FOR

Our recommendation (★ = Recommended, ★★ = Strongly recommended, ★★★ = Best fit)

Viticulture	★★★
Arboriculture	★★★
Horticulture	★★★
Parks and Gardens	★★★
Nursery	★★★
Small hand	★★★
Average-sized hand	★★★
Large hand	★★★
Right-handed	★★★
Left-handed	★★★

THE POINTS OF EXCELLENCE



Wire cutting notch

The blades feature a notch that allows for the cutting of small wires without damaging the cutting edge.



Sap groove

The sap groove prevents the blade sticking when cutting "sappy" wood. It saves time and makes pruning easier by removing sap and debris after each cut.



Forged aluminum handles

Lightweight, strong and sturdy thanks to special aluminum alloys and advanced precision forging methods. Equipment comes with a lifetime guarantee*.

ACCESSORIES



FELCO 902
Sharpening tool
Sharpening stone



FELCO 903
Sharpening tool
Sharpener



FELCO 910
Holster
Leather - With belt loop and clip



FELCO 912
Holster
Leather - With belt clip

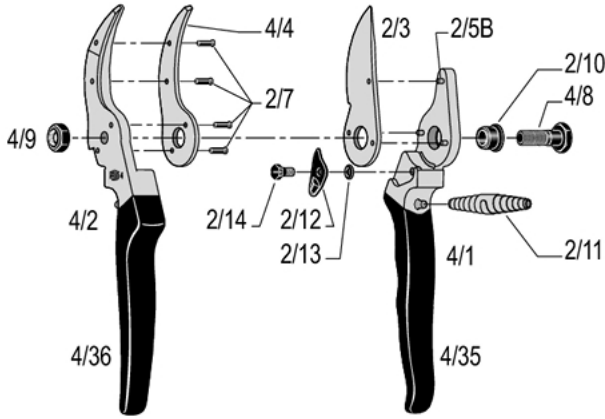


FELCO 980
Maintenance product
Spray



FELCO 990
Maintenance product
Grease

SPARE PARTS



FELCO	REF.	Designation	Composition	UCC Barcode
	2/3	Blade	1x 2/3	7 83929 40001 3
	4/4	Anvil-blade with rivets	1x 4/4 + 4x 2/7	7 83929 40010 5
	4/90	Kit	1x 4/9 + 1x 4/8	7 83929 40015 0
	2/91	Kit	2x 2/11	7 83929 40018 1
	4/1	Handle without blade	1x 4/1 + 3x 2/5B + 1x 2/10 + 1x 2/12 + 1x 2/13 + 1x 2/14 + 1x 4/35	7 83929 40201 7
	4/2	Handle with anvil-blade	1x 4/2 + 1x 4/4 + 4x 2/7 + 1x 4/36	7 83929 40202 4
	4/35	Coating for blade handle	1x 4/35	7 83929 40364 9
	4/36	Coating for anvil-blade handle	1x 4/36	7 83929 40203 1
	2/5B	Rivet for blade	1x 2/5B	7 83929 40166 9

	2/7	Rivet for anvil-blade	1x 2/7	 7 83929 40167 6
	4/8	Bolt	1x 4/8	 7 83929 40204 8
	4/9	Nut	1x 4/9	 7 83929 40205 5
	2/10	Bush	1x 2/10	 7 83929 40151 5
	2/11	White spring	1x 2/11	 7 83929 40152 2
	2/12	Thumb catch	1x 2/12	 7 83929 40153 9
	2/13	Spring for thumb catch	1x 2/13	 7 83929 40154 6
	2/14	Screw for thumb catch	1x 2/14	 7 83929 40155 3

MAINTENANCE



Cleaning

It is advisable to clean your tool after each use.

If your tool is particularly dirty or subject to rusting after exposure to moisture, do not delay cleaning.



Oiling

After cleaning, it is advisable to oil the tool so as to protect it from corrosion. The oil will also unjam the tool.



Sharpening

It is advisable to sharpen your tool at least once a day, but if you feel that your tool is not cutting as well as usual, sharpen it right away!



Dismantling

It is advisable to dismantle your tool on a regular basis, but at the very latest when it appears to be jammed.

PARTS REPLACEMENT



Changing the blade

When the blade and the anvil-blade no longer cross, or when the blade is badly damaged, it is advisable to change it.

Regulate the working of the blade and anvil-blade by adjusting the tightening of the nut. The blade should rub against the anvil-blade over 2/3 of its length.



Changing the thumb catch

When the thumb catch is damaged and loosens when used, even when the screw is readjusted, change it.



Changing the plastic coatings for handles

If the coatings are badly damaged, you can replace them.

Soak the coatings for 2 minutes in boiling water - recommended glue: Loctite 415.